



## Pattern #12030 Milwaukee River Ashlar



## Urethane Formliner

### Materials

- ✓ Cut-Lite - Single Use +
- ✓ Multi-Lite - 6 Reuses +/-
- ✓ Hi-Lite - 12 Reuses +/-
- ✓ Duraform - 100 Reuses +/-

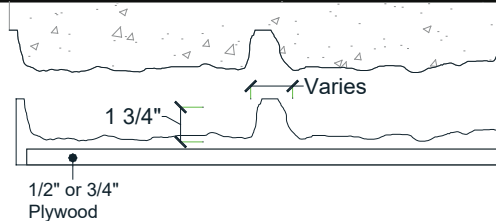
### Care and Handling

Keep out of the sunlight and cover when not in use. Keep away from steam, acids, and certain fuels. For further instructions refer to application guide

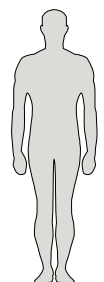
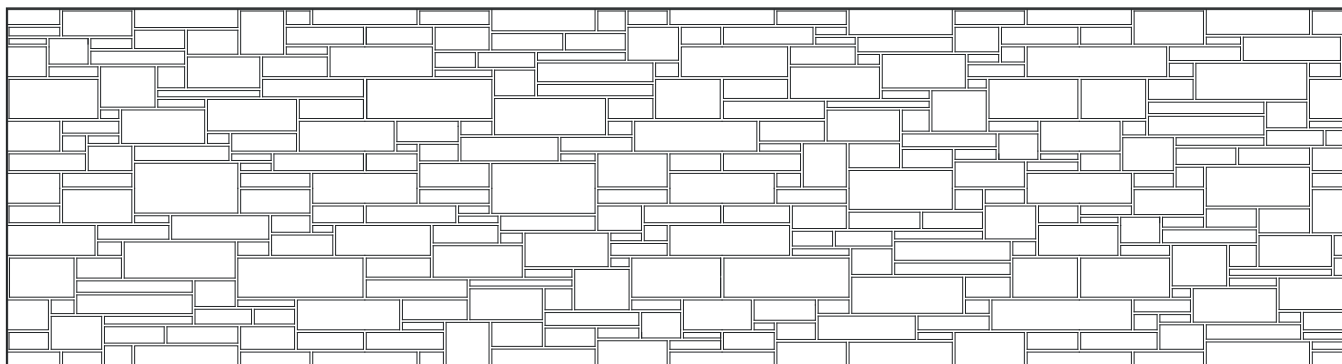
### Note

We recommend a mockup pour simulating actual job conditions. Refer to application guide for further instructions.

### SECTION VIEW



### ELEVATION VIEW





Number of Modules: 2

## Pattern Modules

### MATCHING:

- End to End
- Top to Bottom
- Does Not Match

### ROTATE 180 DEGREES:

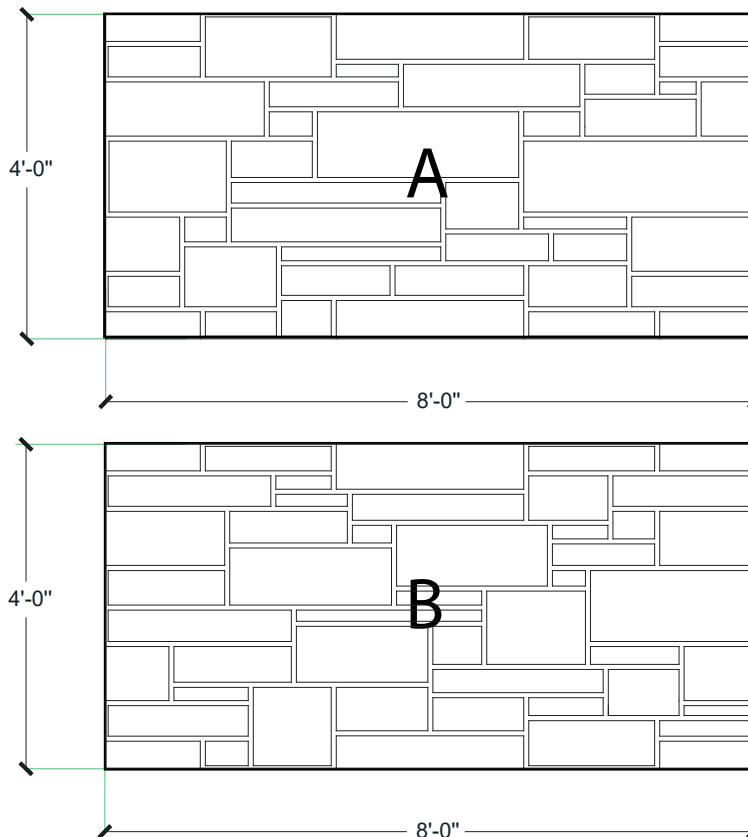
- Yes
- No

### KEYED:

- Yes
- No

### STAGGERED PATTERN:

- Yes
- No





## Pattern Layout

