



## Pattern #T311 Rough Slate



## Urethane Formliner

### Materials

- Cut-Lite - Single Use +
- Multi-Lite - 6 Reuses +/-
- Hi-Lite - 12 Reuses +/-
- Duraform - 100 Reuses +/-

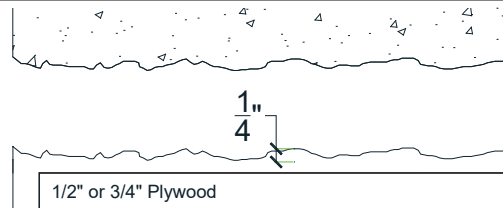
### Care and Handling

Keep out of the sunlight and cover when not in use. Keep away from steam, acids, and certain fuels. For further instructions refer to application guide

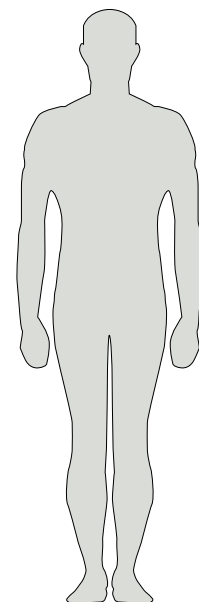
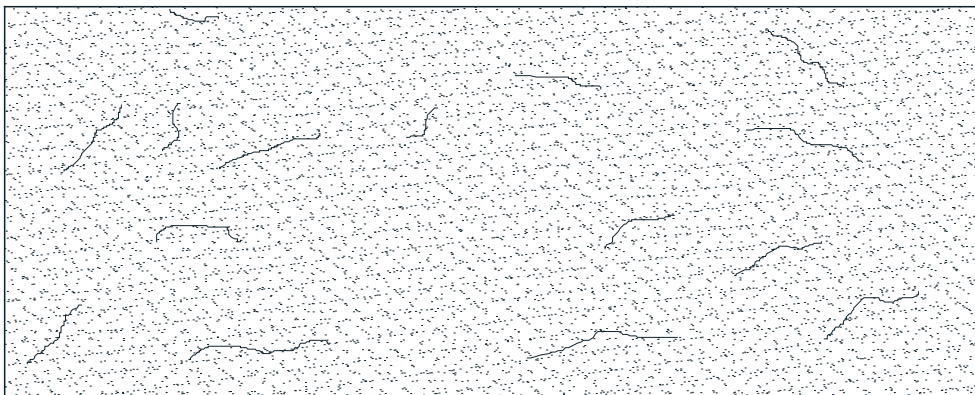
### Note

We recommend a mockup pour simulating actual job conditions. Refer to application guide for further instructions.

### SECTION VIEW



### ELEVATION VIEW





Number of Modules: 1

## Pattern Modules

### MATCHING:

End to End  
Top to Bottom

Does Not Match

### ROTATE 180 DEGREES:

Yes

No

### KEYED:

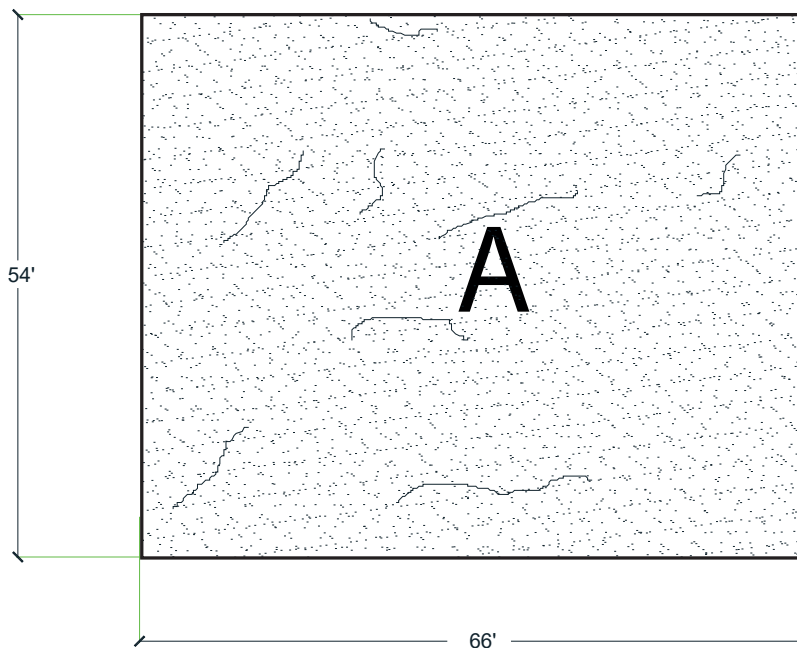
Yes

No

### STAGGERED PATTERN:

Yes

No





## Pattern Layout

