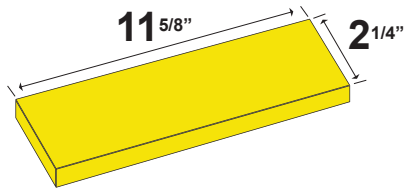




Pattern #9301

Family: Norman Thin Brick

Pattern: Running Bond



Norman

2 1/4" x 11 5/8"

Brick Type: Norman

Size: 11.625" x 2.25"

Tolerance: +0", -1/16"

Brick Type & Size

EZ Brik - Thin Brick System

Materials

STY - Polystyrene (White) - Single Use

Care and Handling

Keep out of the sunlight and cover when not in use. Keep away from steam, acids, and certain fuels. For further instructions refer to application guide.

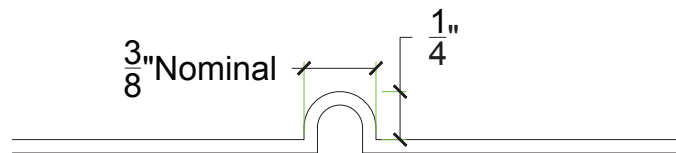
Thermal Expansion

Approximately 1/16" per every 10°F change in material temperature.

Note

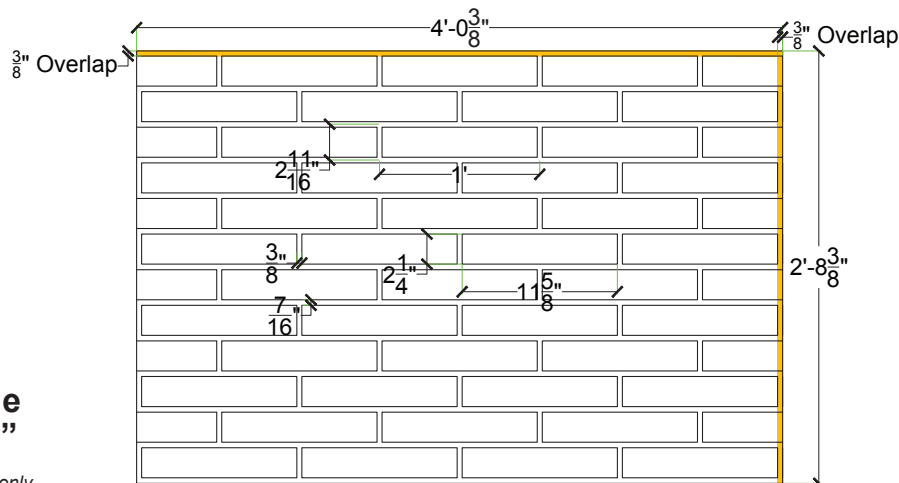
Must be used with PCI standard brick. We recommend a mockup pour simulating actual job conditions. Refer to Application Guide.

MORTAR JOINT TYPE



PLAN VIEW

For use with PCI standard brick only



Material = Styrene
Thickness = .020"

For use with PCI standard brick only