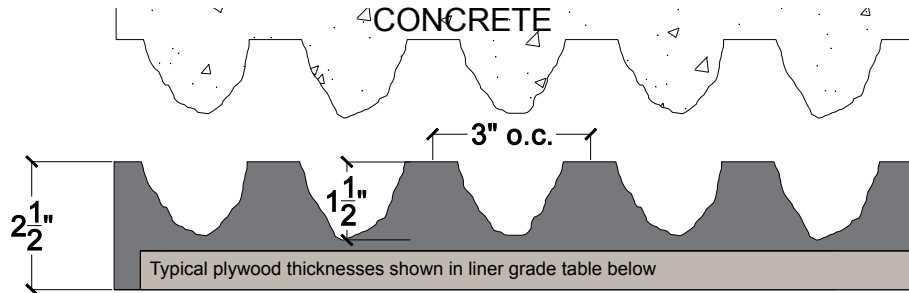


**General Information:**

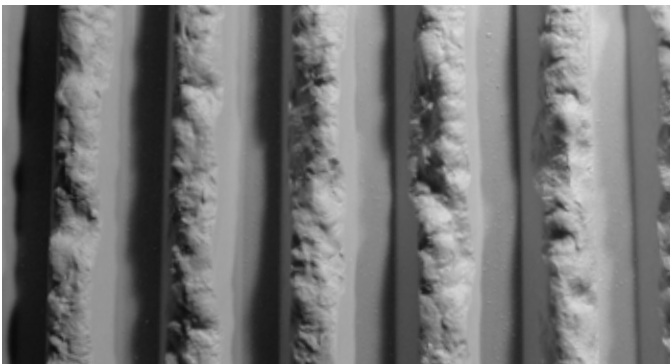
Elastomeric formliners are high end liners that capture pattern details with precision. They couple strength with excellent pattern reproduction. The embedded plywood allows ease of handling and installation for cast in place and precast form systems. They have a multiple reuse factor, subject to pattern configuration and proper handling.



*\*Typical liner thickness shown. Final thickness will be determined on a per job basis.*

*\*\*Representational pattern layout shown. Layout made up of multiple liner modules.*

Grade	Description	Thickness	Weight	Re-use
Duraform	High re-use / Heavy Weight / 3/4" Plywood Typical	3/4"	12.5 lbs/sq ft	1000+
Hi-Lite	High re-use / Lightweight / 1/2" Plywood Typical	1/2"	8.5 lbs/sq ft	1000+
Multi-Lite	Medium re-use / Lightweight / 1/2" Plywood Typical	1/2"	8.5 lbs/sq ft	500-1000
Cut-Lite	Low re-use / Lightweight / 1/2" Plywood Typical	1/2"	8.5 lbs/sq ft	100-500



**Care and Handling:**

- Keep out of the sunlight and covered when not in use
- Keep away from steam, acids, and certain fuels
- Do not expose to temperatures >150°F (65.5°C)
- For further instructions refer to the application guide

Available Grades:	Duraform	Hi-Lite	Multi-Lite	Cut-Lite
<b>Description:</b>	High re-use / Heavy Weight / 3/4" Plywood Typical	High re-use / Lightweight / 1/2" Plywood Typical	Medium re-use / Lightweight / 1/2" Plywood Typical	Low re-use / Lightweight / 1/2" Plywood Typical