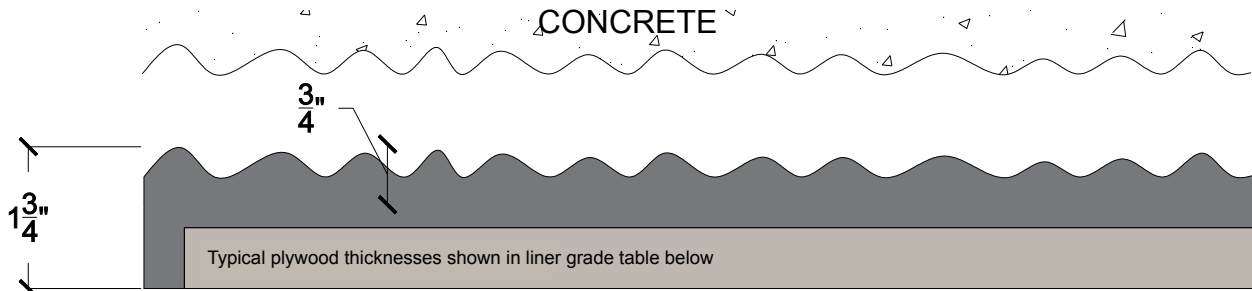


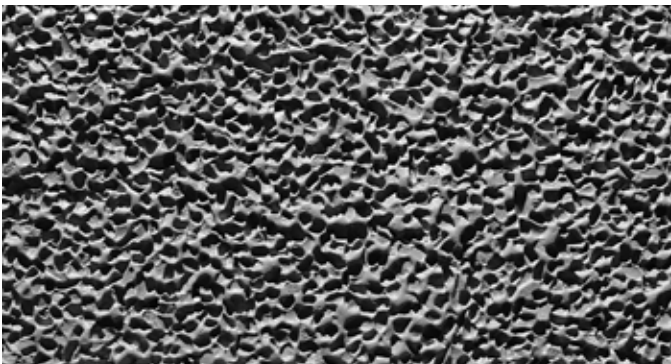
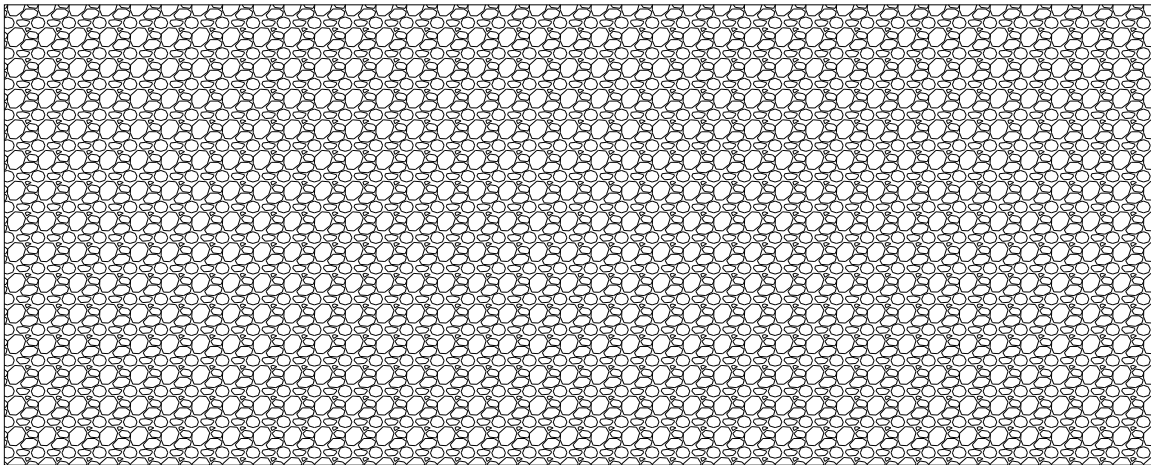
Pattern #T331 Embedded Pea Gravel

General Information:

Elastomeric form liners are high end liners that capture pattern details with precision. They couple strength with excellent pattern reproduction. The embedded plywood allows ease of handling and installation for cast in place and precast form systems. They have a multiple reuse factor, subject to pattern configuration and proper handling.



**Typical liner thickness shown. Final thickness will be determined on a per job basis.
**Representational pattern layout shown. Layout made up of multiple liner modules.*



Care and Handling:

- Keep out of the sunlight and covered when not in use
- Keep away from steam, acids, and certain fuels
- Do not expose to temperatures >150°F (65.5°C)
- For further instructions refer to the application guide

| Available Grades: | Duraform | Hi-Lite | Multi-Lite | Cut-Lite |
|---------------------|--|---------------|---------------|---------------|
| Description: | High reuse / Heavy Weight / 3/4" Plywood Typical | Not Available | Not Available | Not Available |