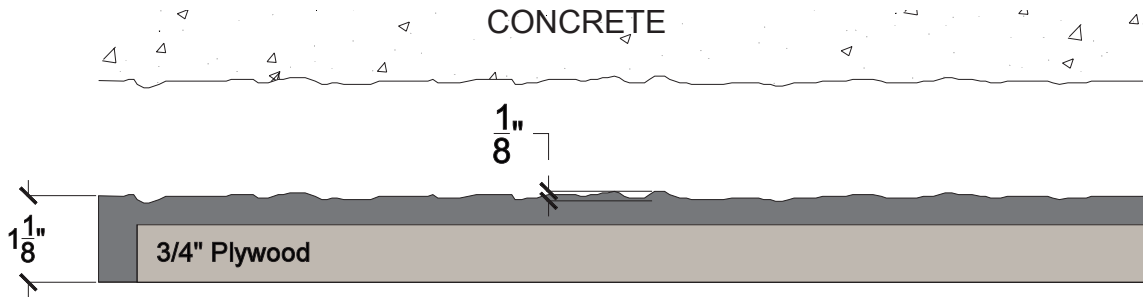
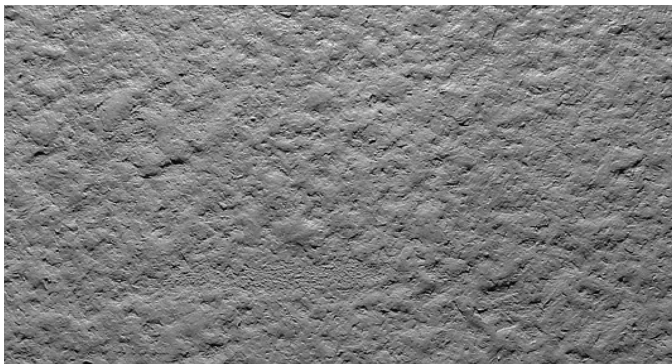
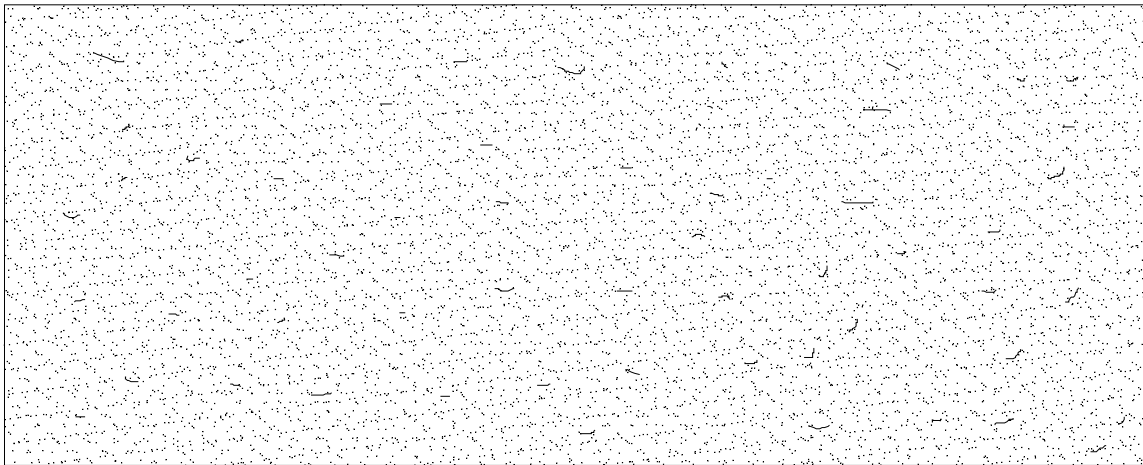


**General Information:**

Elastomeric formliners are high end liners that capture pattern details with precision. They couple strength with excellent pattern reproduction. The embedded plywood allows ease of handling and installation for cast in place and precast form systems. They have a multiple reuse factor, subject to pattern configuration and proper handling.



*\*Representational pattern layout shown. Layout made up of multiple liner modules*



**Care and Handling:**

- Keep out of the sunlight and covered when not in use
- Keep away from steam, acids, and certain fuels
- Do not expose to temperatures >150°F (65.5°C)
- For further instructions refer to the application guide

Available Grades:	Duraform	Hi-Lite	Multi-Lite	Cut-Lite
<b>Description:</b>	High reuse / Heavy Weight	High reuse / Lightweight	Medium reuse / Lightweight	Low reuse / Lightweight