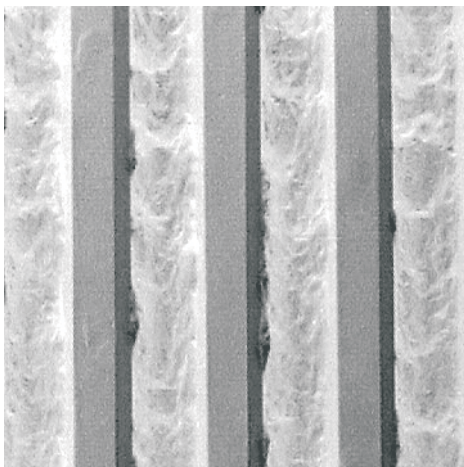
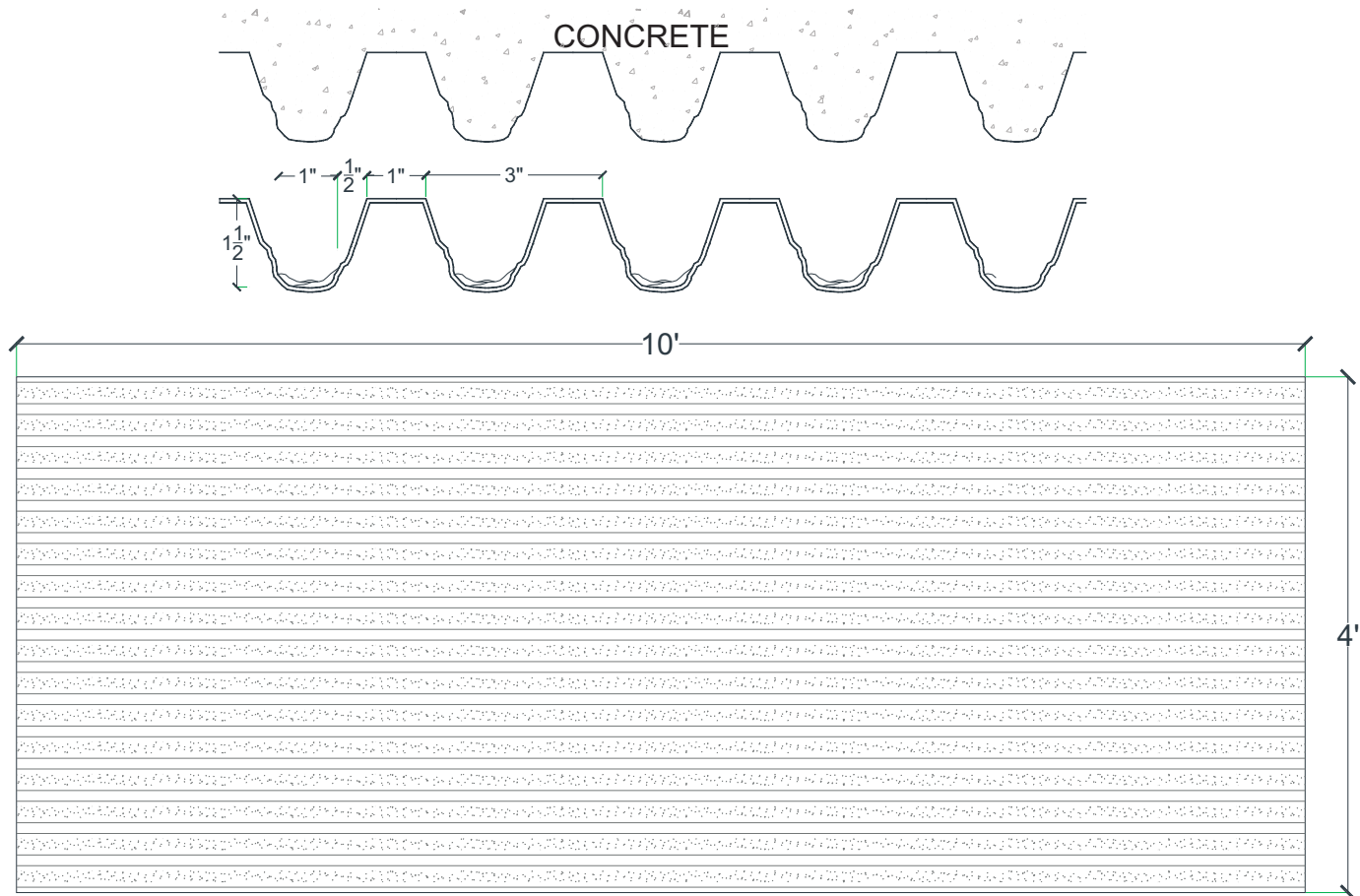


1 1/2" Fractured Fin 3"oc (1" Peak, 2" Rib)

General Information:

Thermoformed ABS and Styrene plastic formliners are an inexpensive alternative for providing architectural concrete. The Styrene single use liner is the least expensive liner option. The ABS plastic formliner properties allows for an up to ten reuse factor depending on the design and handling.



Thermal Deformation:

- Do not expose to temperatures >140°F (60°C)

Care and Handling:

- Keep out of the sunlight and covered when not in use
- Keep away from steam, acids, and certain fuels
- For further instructions refer to the application guide

Thermal expansion:

- +/- 1/8" @ 70°F

Note:

Pattern may require additional backing. We recommend a mockup pour simulating job conditions.

Material	Product Code	# of Reuses	Mat. Thickness	Std. Dims.	Color
Styrene	3012-STY	1	.150	4'x10'	White
ABS	3012-ABS	Up to 10	.150	4'x10'	Gray